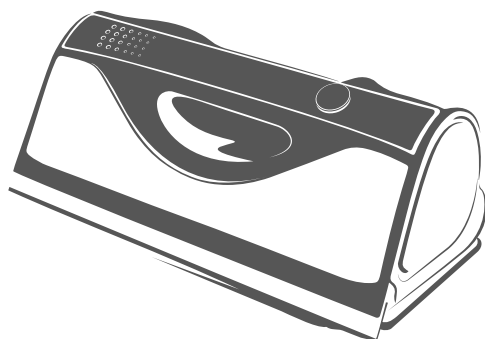


kobold

VORWERK

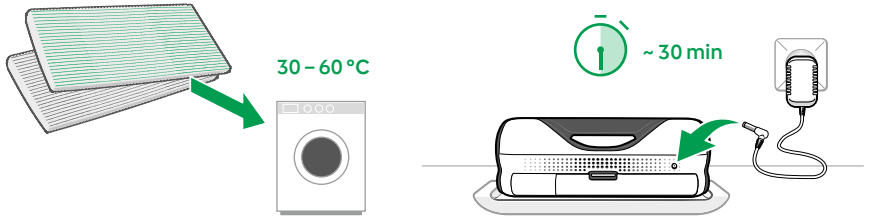
VG100+



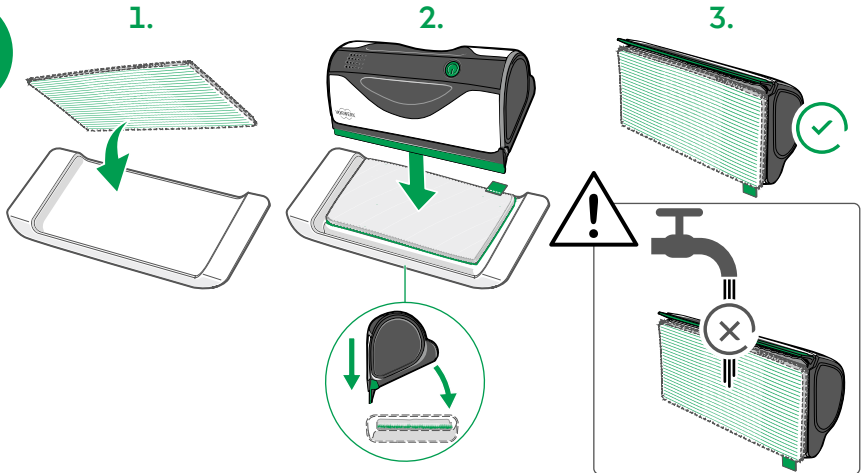
Quick Start

27941-02 • KS • 0823

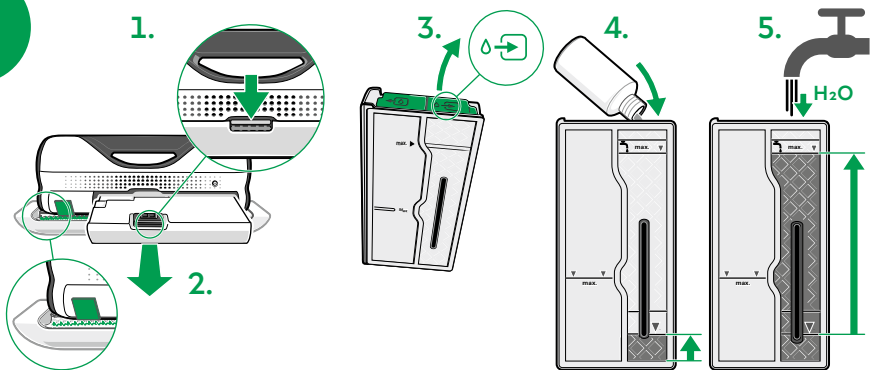
1



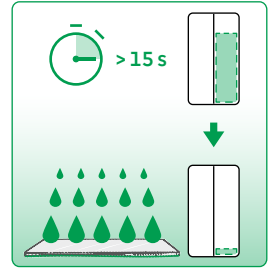
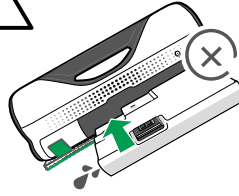
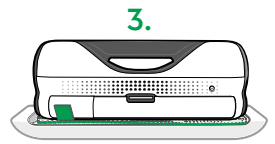
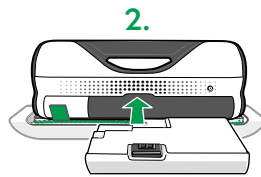
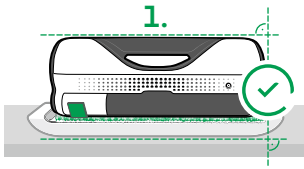
2



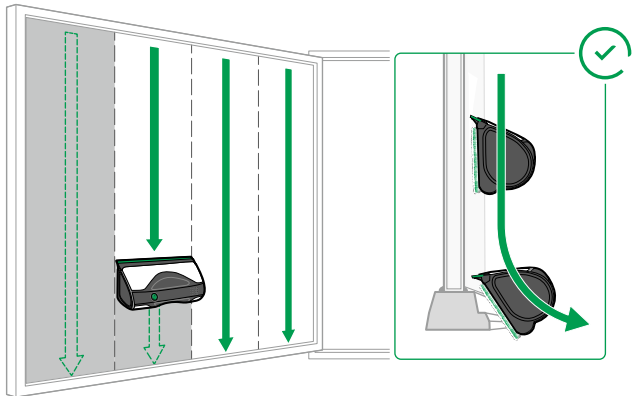
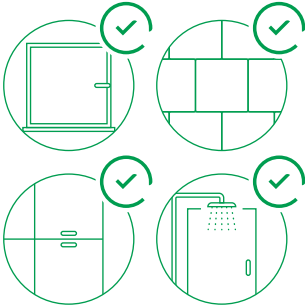
3



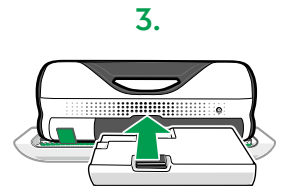
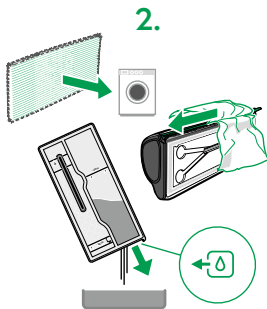
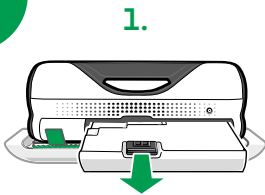
4

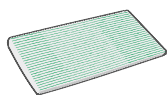


5

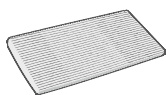


6





MF100



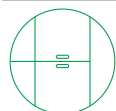
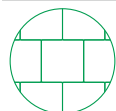
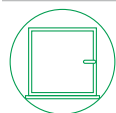
MF100soft



GC100



DA100



Stainless Steel



DE Nicht geeignet für/ **EN** Not suitable for/ **FR** Ne convient pas pour/ **ES** No apto para/ **CZ** Nevhodné pro použití na následujících površích/ **IT** Non adatto per/ **PL** Nieodpowiedni do następujących materiałów:

DE Marmor, Terrazzo, Travertin, Granit, andere Natursteine, Metalloberflächen wie Eisen, Kupfer, Aluminium u.ä., unbehandelte Holzoberflächen und Beton/ **EN** Marble, terrazzo, travertine, granite, other natural stone, metal surfaces such as iron, copper, aluminium etc., untreated wooden surfaces and concrete/ **FR** marbre, granito, travertin, granit, autres pierres naturelles, surfaces métalliques telles que fer, cuivre, aluminium, etc., surfaces en bois non traitées et béton/ **ES** Mármol, terrazo, travertino, granito, otras piedras naturales, superficies metálicas como hierro, cobre, aluminio, etc., superficies de madera sin tratar y hormigón/ **CZ** mramor, teraco, travertin, žula, další přírodní kameny, kovové povrchy, například ze železa, mědi, hliníku atd., neupravené dřevěné povrchy a beton/ **IT** marmo, terrazzo, travertino, granito, altre pietre naturali, superfici in metallo come ferro, rame, alluminio e simili, superfici in legno non trattate e calcestruzzo/ **PL** marmur, lastryko, trawertyn, granit, inne kamienie naturalne, powierzchnie metalowe, takie jak żelazo, miedź, aluminium itp., nieobrobione powierzchnie drewniane i beton



www.vorwerk.com/user-manual-Kobold-VG100